



Design No. U463

BXUV.U463
Fire-resistance Ratings - ANSI/UL 263

[Page Bottom](#)

Design/System/Construction/Assembly Usage Disclaimer

- Authorities Having Jurisdiction should be consulted in all cases as to the particular requirements covering the installation and use of UL Certified products, equipment, system, devices, and materials.
- Authorities Having Jurisdiction should be consulted before construction.
- Fire resistance assemblies and products are developed by the design submitter and have been investigated by UL for compliance with applicable requirements. The published information cannot always address every construction nuance encountered in the field.
- When field issues arise, it is recommended the first contact for assistance be the technical service staff provided by the product manufacturer noted for the design. Users of fire resistance assemblies are advised to consult the general Guide Information for each product category and each group of assemblies. The Guide Information includes specifics concerning alternate materials and alternate methods of construction.
- Only products which bear UL's Mark are considered Certified.

Fire-resistance Ratings - ANSI/UL 263

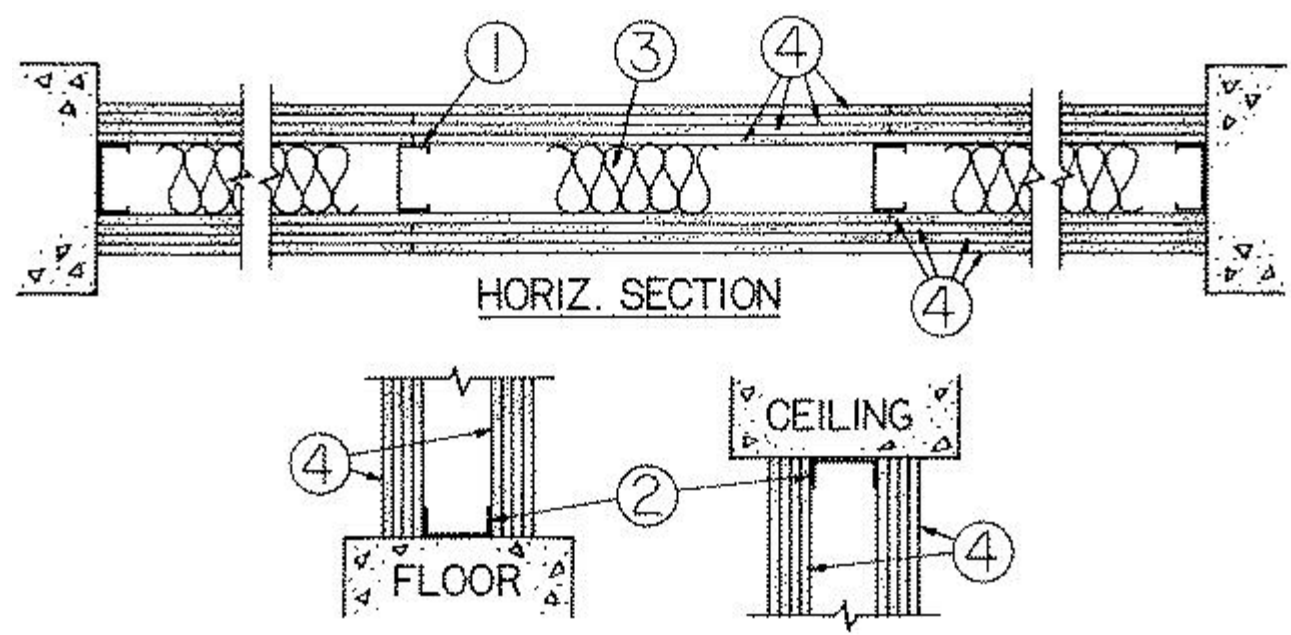
[See General Information for Fire-resistance Ratings - ANSI/UL 263](#)

Design No. U463

April 09, 2013

Nonbearing Wall Rating — 3 or 4 HR

(See Item 4)



1. **Studs** — - Channel-shaped, min 1-5/8 in. wide by 1 1/4 in. deep, with 5/16 in. folded back return flange legs. Fabricated from No. 25 MSG galv steel. Stud spacing 16 or 24 in. OC. Studs to be cut 1 in. less than assembly height.

1A. **Framing Members* - Steel Studs** — Not shown - In lieu of Item 1 — For use with Item 2A, proprietary channel shaped steel studs, 1-1/4 in. deep by min 1-5/8 in. wide fabricated from min 0.020 in. thick galv steel,

spaced max 24 in. OC. Studs cut 1 in. less in length than assembly height.

CALIFORNIA EXPANDED METAL PRODUCTS CO — Viper20™

MARINO/WARE, DIV OF WARE INDUSTRIES INC — Viper20™

PHILLIPS MFG CO L L C — Viper20™

1B. Framing Members*— Steel Studs — Not shown - In lieu of Item 1 — For use with Item 2B, channel shaped steel studs, 1-1/4 in. deep by min 1-5/8 in. wide fabricated from min 0.018 in. thick galv steel, spaced max 24 in. OC. Studs cut 1 in. less in length than assembly height.

CLARKDIETRICH BUILDING SYSTEMS — CD ProSTUD

DMFCWBS L L C — ProSTUD

MBA BUILDING SUPPLIES — ProSTUD

RAM SALES L L C — Ram ProSTUD

SOUTHEASTERN STUD & COMPONENTS INC — ProSTUD

STEEL STRUCTURAL SYSTEMS L L C — Tri-S ProSTUD

1C. Framing Members* - Steel Studs — Not shown - In lieu of Item 1 — For use with Item 2C, proprietary channel shaped steel studs, 1-1/4 in. deep by min 1-5/8 in. wide fabricated from min 0.020 in. thick galv steel, spaced max 24 in. OC. Studs cut 1 in. less in length than assembly height.

TELLING INDUSTRIES L L C — Viper20™

1D. Framing Members*— Steel Studs — Not shown - In lieu of Item 1 — For use with Item 2D, channel shaped steel studs, 1-1/4 in. deep by min 1-5/8 in. wide fabricated from min 0.018 in. thick galv steel, spaced max 24 in. OC. Studs cut 1 in. less in length than assembly height.

TELLING INDUSTRIES L L C — TRUE-STUD™

1E. Framing Members*-Steel Studs — Not shown-In lieu of Item 1- For use with Item 2E- proprietary channel shaped steel studs, min 1.97 in. wide by 1-1/4 in. deep. Fabricated from No. 25 MSG galv steel. Stud spacing 16 or 24 in. OC. Studs to be cut 1 in. less than assembly height.

KIRII (HONG KONG) LTD — Type KIRII

2. Floor and Ceiling Runners — - Channel-shaped runners, min 1-5/8 in. wide by 1-1/4 in. deep, fabricated from No. 25 MSG galv steel. Attached to floor and ceiling with fasteners spaced 24 in. OC. max.

2A. Framing Members* - Floor and Ceiling Runners — Not shown - In lieu of Item 2 — For use with Item 1A, proprietary channel shaped runners, 1-1/4 in. deep by min 1-5/8 in. wide fabricated from min 0.020 in. thick galv steel, attached to floor and ceiling with fasteners spaced 24 in. OC max.

CALIFORNIA EXPANDED METAL PRODUCTS CO — Viper20™ Track

MARINO/WARE, DIV OF WARE INDUSTRIES INC — Viper20™ Track

PHILLIPS MFG CO L L C — Viper20™ Track

2B. Framing Members*— Floor and Ceiling Runners — Not shown - In lieu of Item 2 — For use with Item 1B, channel shaped runners, 1-1/4 in. deep by min 1-5/8 in. wide fabricated from min 0.018 in. thick galv steel, attached to floor and ceiling with fasteners spaced 24 in. OC max.

CLARKDIETRICH BUILDING SYSTEMS — CD ProTRAK

DMFCWBS L L C — ProTRAK

MBA BUILDING SUPPLIES — ProTRAK

RAM SALES L L C — Ram ProTRAK

SOUTHEASTERN STUD & COMPONENTS INC — ProTRAK

STEEL STRUCTURAL SYSTEMS L L C — Tri-S ProTRAK

2C. Framing Members* - Floor and Ceiling Runners — Not shown - In lieu of Item 2 — For use with Item 1C, proprietary channel shaped runners, 1-1/4 in. deep by min 1-5/8 in. wide fabricated from min 0.020 in. thick galv steel, attached to floor and ceiling with fasteners spaced 24 in. OC max.

TELLING INDUSTRIES L L C — Viper20™ Track

2D. Framing Members*— Floor and Ceiling Runners — Not shown - In lieu of Item 2 — For use with Item 1D, channel shaped runners, 1-1/4 in. deep by min 1-5/8 in. wide fabricated from min 0.018 in. thick galv steel, attached to floor and ceiling with fasteners spaced 24 in. OC max.

TELLING INDUSTRIES L L C — TRUE-TRACK™

2E. Framing Members*-Floor and Ceiling Runners — Not shown-In lieu of Item 2-For use with Item 1E-proprietary channel shaped runners, 1-1/4 in. deep by min 1.97 in. wide fabricated from min 25 MSG thick galv steel, attached to floor and ceiling with fasteners spaced 24 in. OC max.

KIRII (HONG KONG) LTD — Type KIRII

3. Batts and Blankets* — (optional) — Nominal 1-1/2 in. thick, placed in interior of wall cavity.

See **Batts and Blankets** (BZJZ) category for names of manufacturers.

3A. Fiber, Sprayed* — As an alternate to **Batts and Blankets** (Item 3) — (100% Borate Formulation) — Spray applied cellulose material. The fiber is applied with water to completely fill the enclosed cavity in accordance with the application instructions supplied with the product with a nominal dry density of 2.7 lb/ft³. Alternate Application Method: The fiber is applied without water or adhesive at a nominal dry density of 3.5 lb/ft³, in accordance with the application instructions supplied with the product.

U S GREENFIBER L L C — INS735 & INS745 for use with wet or dry application. INS765LD and INS770LD are to be used for dry application only.

3B. Fiber, Sprayed* — As an alternate to **Batts and Blankets** (Item 3) and Item 3A - Spray applied cellulose insulation material. The fiber is applied with water to interior surfaces in accordance with the application instructions supplied with the product. Applied to completely fill the enclosed cavity. Minimum dry density of 4.3 pounds per cubic ft.

NU-WOOL CO INC — Cellulose Insulation

3C. Fiber, Sprayed* — As an alternate to Batts and Blankets (Item 3) - Spray applied cellulose fiber. The fiber is applied with water to completely fill the enclosed cavity in accordance with the application instructions supplied with the product. The minimum dry density shall be 4.30 lbs/ft³.

INTERNATIONAL CELLULOSE CORP — Celbar-RL

4. Gypsum Board* — 1/2 in. thick, 4 ft wide with square or tapered edges.

For 4 Hr Rating - Four layers of gypsum board to be used. Inner layers to be applied vertically with joints centered over studs. Outer layer may be applied vertically or horizontally. First layer fastened to each stud with 1 in. long Type S, self-tapping steel screws. Second layer fastened to each stud through the first layer with 1-5/8 in. long, Type S, self-tapping steel screws. Third layer fastened to each stud through the first and second layers with 2-1/4 in. long, Type S, self-tapping steel screws. Fourth layer fastened to each stud through the first, second and third layers with 2-5/8 in. long, Type S, self-tapping steel screws. First layer screws shall be located 5 in. from top and bottom of wall with a maximum spacing of 48 in. O.C. vertically between top and bottom screws. Second and third layer screws shall be located 4 and 3 in., respectively, from the top and bottom of wall with the same vertical spacing as the first layer screws. Fourth layer screws shall be located 2 in. from top and bottom of wall and spaced 12 in. O.C. vertically. Each fourth layer horizontal board end shall be centered over and secured to the stud with screws spaced 1/2 in. from end joint and 12 in. O.C. vertically. Board end joints shall be staggered. At board side joints all screws shall be located 1/2 in. from the joints. Fourth layer also secured to the second and third layers with 1-1/2 in. long, Type G, self-tapping steel screws located midway between studs and 1 in. from the horizontal joint. Joints in each layer of wallboard to be staggered from the joints in the adjacent layer and on opposite sides of studs.

For 3 Hr Rating — Three layers of gypsum board to be used. Inner layers to be applied vertically with joints centered over studs. Outer layer may be applied vertically or horizontally. First layer fastened to each stud with 1 in. long, Type S, self-tapping steel screws. Second layer fastened to each stud through the first layer with 1-5/8 in. long, Type S, self-tapping steel screws. Third layer fastened to each stud through the first and second layers with 2-1/4 in. long, Type S, self-tapping steel screws. First and second layer screws shall be located 4 and 3 in. from top and bottom of wall, respectively, with a maximum spacing of 48 in. O.C. vertically. The third layer screws shall be located 2 in. from top and bottom of wall with a maximum spacing of 12 in. O.C. vertically. Each third layer horizontal board end shall be centered over and secured to the stud with Type S, self-tapping steel screws spaced 1/2 in. from end joint and 12 in. O.C. vertically. Third layer, also secured to the first and the second layers with 1-1/2 in. long, Type G, Self-tapping steel screws located midway between studs and 1 in. from the horizontal joint. Board end joints shall be staggered. Vertical board joints to be staggered from the joints in the adjacent layer and on opposite sides of studs.

CERTAINTED GYPSUM INC — Type FRPC, Type C.

CERTAINTED GYPSUM CANADA INC — Type C.

THAI GYPSUM PRODUCTS PCL — Type C.

4A. Wall and Partition Facings and Accessories* — (Not Shown) — Composite Gypsum Panel — Nominal 5/8 in. thick, 4 ft wide panels. As an alternate to Item 4 when used only as the base layer on one or both sides of wall, applied vertically only and secured as described in Item 4.

SERIOUS ENERGY INC — Type QuietRock ES, Type QuietRock QR-527.

5. Joint Tape and Compound (Not Shown) — Vinyl or casein, dry or premixed joint compound applied in two coats to joints and screw heads. Paper tape, 2 in. wide, embedded in first layer of compound over all joints.

*Bearing the UL Classification Mark

[Last Updated](#) on 2013-04-09

[Questions?](#)

[Print this page](#)

[Terms of Use](#)

[Page Top](#)

© 2013 UL LLC

When the UL Leaf Mark is on the product, or when the word "Environment" is included in the UL Mark, please search the [UL Environment database](#) for additional information regarding this product's certification.

The appearance of a company's name or product in this database does not in itself assure that products so identified have been manufactured under UL's Follow-Up Service. Only those products bearing the UL Mark should be considered to be Certified and covered under UL's Follow-Up Service. Always look for the Mark on the product.

UL permits the reproduction of the material contained in the Online Certification Directory subject to the following conditions: 1. The Guide Information, Assemblies, Constructions, Designs, Systems, and/or Certifications (files) must be presented in their entirety and in a non-misleading manner, without any manipulation of the data (or drawings). 2. The statement "Reprinted from the Online Certifications Directory with permission from UL" must appear adjacent to the extracted material. In addition, the reprinted material must include a copyright notice in the following format: "© 2013 UL LLC".